

Are You Ready To...

- Take charge of HIPAA guideline management?
- Improve inbound and outbound data quality?
- Accelerate partner implementations and guideline updates?

EDISIM® is the most trusted name in EDI productivity software. This versatile suite gives you the power to define, publish and test your EDI guidelines and business rules, letting you improve the quality of data flowing to and from your healthcare organization, quickly... easily... automatically.

When your guidelines are not clearly defined and enforced the cost is real; errors take time to identify and correct, testing requires resources from multiple departments, and communicating with your partners is difficult. And when bad data reaches your partners or downstream systems, pending claims, time-consuming research, increased call volume can result.

EDISIM makes managing your healthcare e-commerce operation a breeze. By taking control of your business rules and custom guidelines, you save time, ensure HIPAA compliance, and speed implementations.

EDISIM helps you define, publish, and test your EDI guidelines, so you can:

- Ensure inbound and outbound transactions comply with HIPAA standards and your specifications.
- Easily integrate custom business rules into your guidelines.
- Facilitate guideline updates and standard migrations – including 5010 migration – with powerful guideline comparison and migration functions.
- Support company-specific business rules, by automatically enforcing alternate loops, groups, and segments.
- Publish professional documentation customized for each partner.
- Create unlimited test data for system testing.
- Quickly identify, interpret, and correct errors.

EDISIM lets you set the ground rules for your EDI community, so you can improve data accuracy and operational efficiency, quickly... easily... automatically.

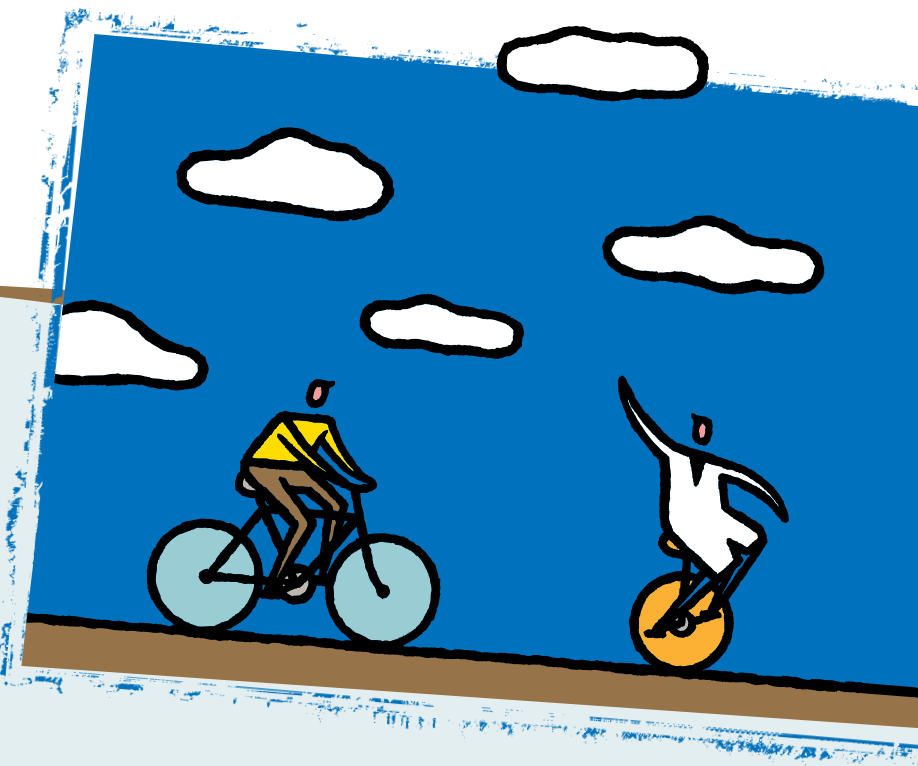
That's why the nation's leading health plans have Foresight.

Different spokes for different folks.

For details, visit www.ForesightCorp.com/EDISIM
or call 1.888.500.0800.



Foresight



TAKE CHARGE OF EDI GUIDELINE MANAGEMENT

DEFINE CUSTOM EDI SPECIFICATIONS QUICKLY AND EASILY

- Work in any format: EDI, XML, Flat File.
- Define, modify, compare, migrate, and merge guidelines through an easy-to-use graphical interface.
- Easily define and integrate custom business rules.
- Import and export code lists to your custom guidelines.
- Build your guidelines from a vast library of published standards, including all HIPAA transactions.

PUBLISH PROFESSIONAL DOCUMENTATION

- Output guidelines in .csv, .rtf or HTML formats.
- Display different levels of documentation details based on your target audience.
- Attach custom leading and trailing matter to your guidelines.

IMPROVE INBOUND AND OUTBOUND DATA QUALITY

ENSURE COMPLIANCE PRIOR TO PRODUCTION

- Test inbound and outbound files with desktop-based file validation.

REDUCE RESEARCH TIME

- Find and evaluate problem transactions quickly with detailed, easy-to-interpret error reporting.
- View diagnostics by error type and severity level.
- Link directly to the standards library from the validation results file.
- Correct data directly in source files.
- Share error reports with your trading partners.

ENFORCE YOUR BUSINESS RULES THROUGHOUT YOUR OPERATION

- Use EDISIM guidelines with Total OnBoarding® for trading partner self-testing, Instream® for automated validation in your production workflow, and Transaction Insight® for advanced business reporting.

ACCELERATE PARTNER IMPLEMENTATIONS & GUIDELINE UPDATES

PROMOTE PARTNERS TO PRODUCTION WITH CERTAINTY

- Test partner files to ensure compliance with your business rules and specifications.

CREATE TEST FILES

- Create good and bad EDI test data with Test Data Generator to assure conformity with internal and external partner systems.

MIGRATE TO NEW STANDARD VERSIONS EASILY

- Compare EDI guidelines without manual line-by-line review. Perfect for facilitating your migration to 5010 and ICD-10.
- Merge existing business rules into new documents, then publish new documentation for your partners.

VALIDATE FILES BEFORE LAUNCHING IN PRODUCTION

- Check inbound and outbound files for errors.



Foresight